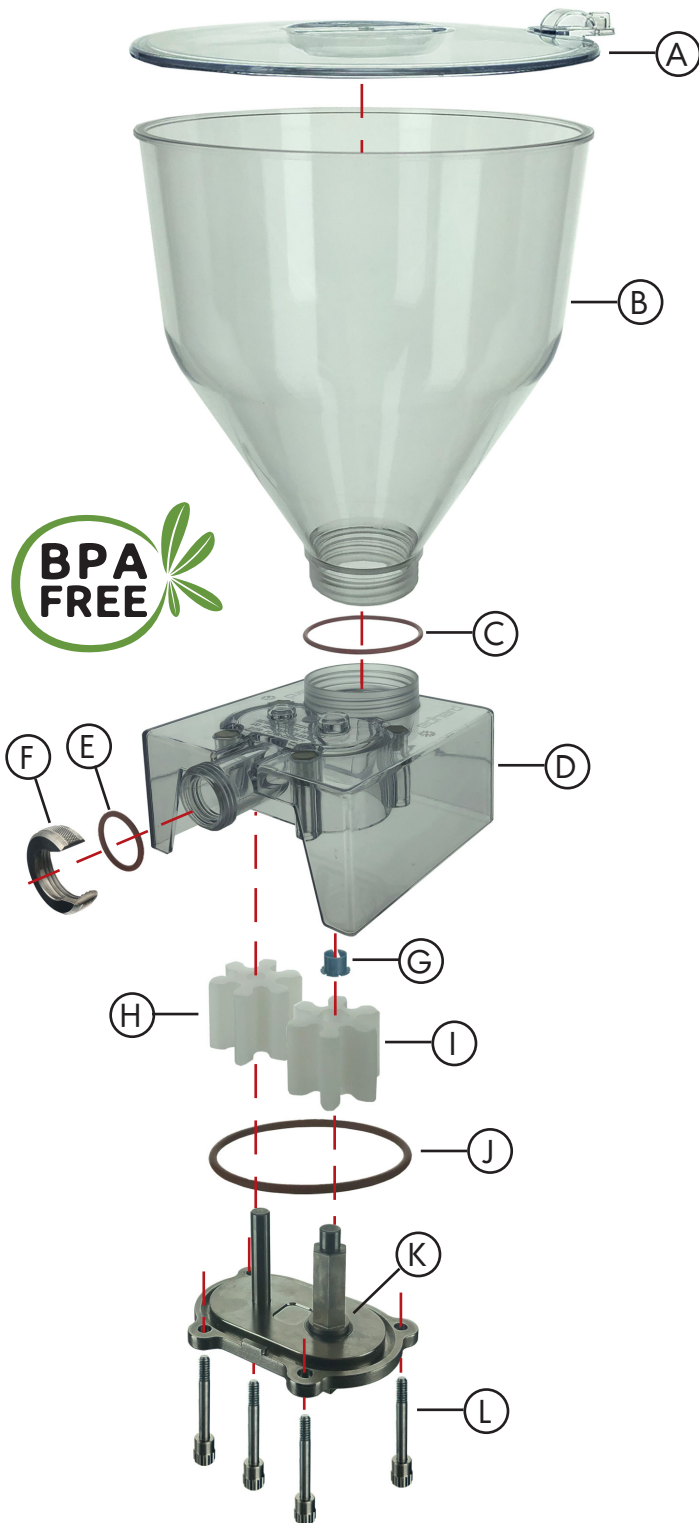
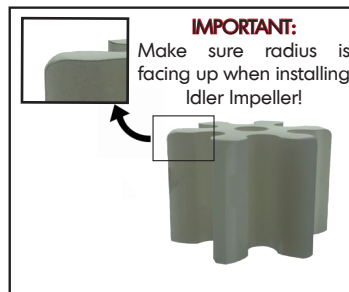


WARNING!
SEVERE CRUSH HAZARD. KEEP FINGERS OUT OF PUMP INLET AND OUTLET.
(SEE ENGRAVED WARNING ON PUMP HOUSING)



Instructions for assembly:

1. Place Drive Impeller [I] on Pump Cover [K] first. Then put Idler Impeller [H] on. ***IMPORTANT: Make sure Idler impeller is oriented so that radiused end is facing upward- see note below*.**
2. Place blue Bearing [G] into Housing [D] so that the key of Bearing seats into keyway and sits flush inside.
3. Make sure O-Ring [J] is seated fully in groove on Pump Cover.
4. Assemble Pump Cover to Housing so that the shafts engage the holes of the Housing.
5. Insert 4 Thumbscrews [L] and tighten each one. **Repeat the tightening process in a cross pattern until the Pump Cover sits flush against the bottom of the Housing and O-Ring is not visible from the side.**
6. Make sure there is an O-Ring [C] on Hopper [B] and thread Hopper onto Housing until fully seated.



Ref Let.	Description	Qty.	Part Number
A	Lid (6 Qt.)	1	F-2152
	Lid (18 Qt.)	1	F-2261
B	Hopper (6Qt./5.5L)	1	F-21590
	Hopper (18Qt./17L)	1	F-21591
C	Seal O-Ring	1	F-21605
D	Housing- FHP Type	1	FHP-3970
E	Seal O-Ring for Spout	1	RP-2371
F	Spout Retaining Nut	1	FS-2344
G	Nylon Bearing	1	FS-2306
H	Impeller- Idler	1	FHP-2928
I	Impeller- Drive	1	FHP-2929
J	Seal O-Ring for Cover	1	F-2179
K	Stainless Steel Pump Cover Assembly	1	FHP-3341
L	Thumb Screw	4	F-2034

Differences Between F-Series Filler Unit and FHP-Series Filler Unit

1) FHP has both upper and lower Shaft bearings (F-Series has lower bearings, only).

Provides added stability under higher pressure situations when pumping more viscous, challenging products.

2) FHP has a Stainless Steel Pump Cover, F-Series has Tritan (plastic) Pump Cover. FHP cover is much more rigid, which allows pumping of more viscous products with less chance for flexion and ultimate breakage.

3) FHP has machined impellers- F-Series impellers are molded. Machined impellers provide a more efficient pumping scenario with less back-flow.

4) FHP has a Hexagonal (6 sides) shaped Drive Shaft, while the F-Series has a "D" shaped Drive Shaft. The Hex shape gives the FHP Shaft more surface contact and a better transfer of power from the Power Base.

5) The F-Series is available in single and double outlet configurations while the FHP-Series is only available in a 7/8" single outlet. It is, however, easily convertible to a Double outlet with the addition of a FS-3305: Double Manifold.

FHP-Series is designed for depositing through our Stainless Steel Cupcake Spouts, any of our Ring Donut Spouts, FS-3305 Double Manifold and the FS-3148 Hose Assy.

The FHP is ideal for dosing thicker, more viscous and challenging products with higher accuracy & for full-time production hours.

The F-Series Filler Units should only be used for more loose products in applications where extreme accuracy is not a prime concern.



WARNING: While the F-Series Filler Units may be capable of pumping more viscous product for a while, they will eventually wear and the Pump Housing will break. This could possibly cause the introduction of plastic slivers into the end product.